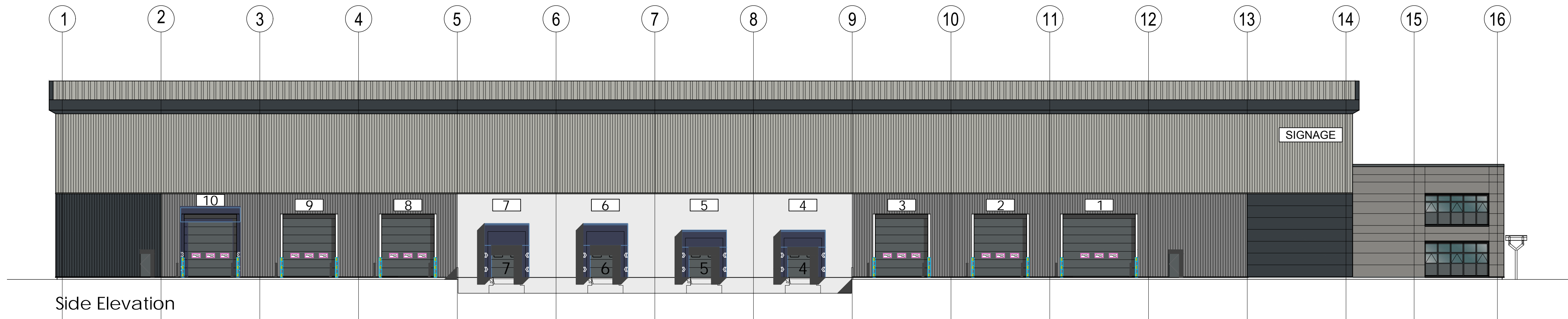
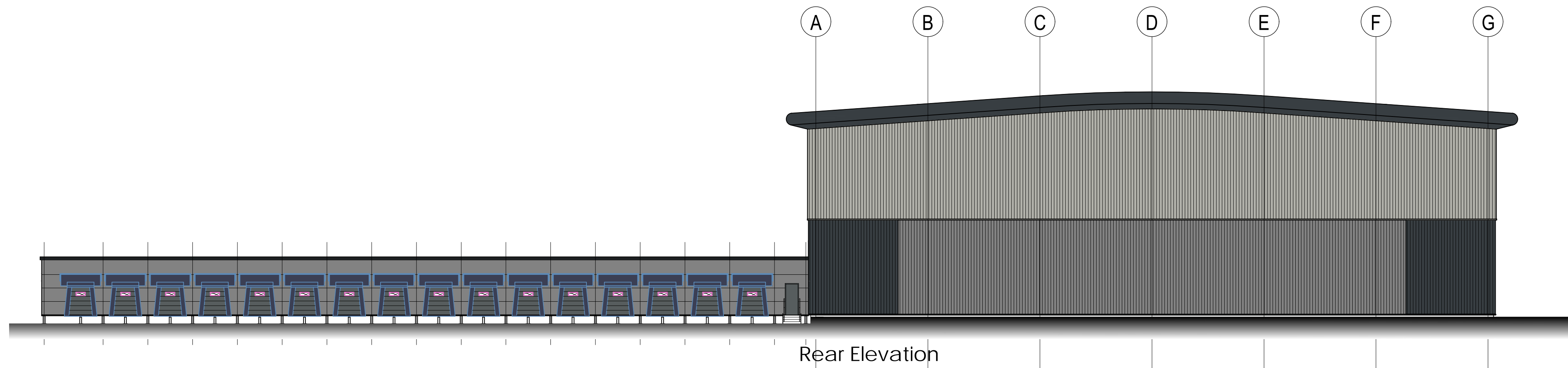


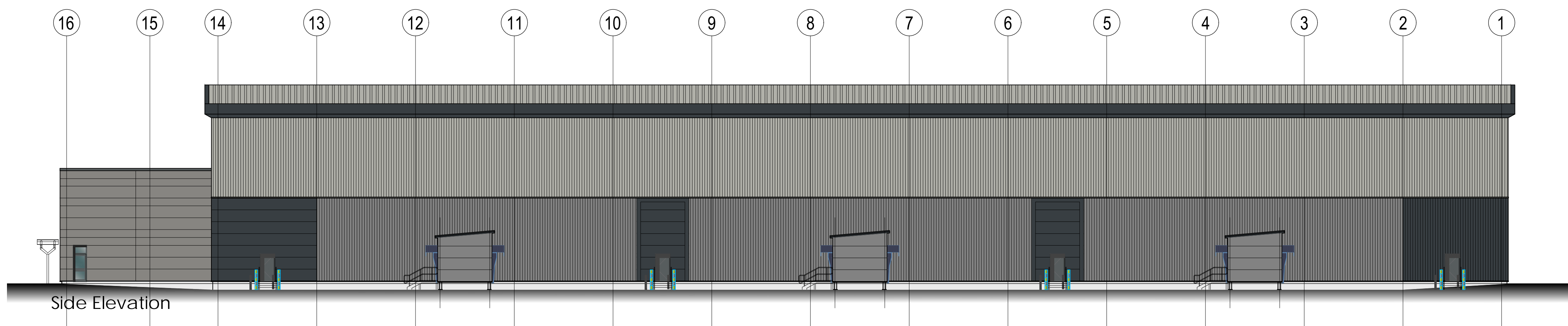
Front Elevation



Side Elevation



Rear Elevation



Side Elevation

**SCHEDULE OF MATERIALS**

- Roof: Profiled Steel built up Cladding with HPS 200 finish.  
Colour: Goosewing Grey RAL 7038.
- Roof Lights: 15% of Warehouse Area.
- Preformed Eaves: Pressed aluminium sheet with HPS 200 finish.-  
Colour: Anthracite RAL 7016.
- Warehouse High Level: Horizontal Half Round profile built up Steel Cladding with HPS 200 finish.-  
Colour: Goosewing Grey RAL 7038.
- Warehouse Low Level: Vertical Profiled built up Steel Cladding with HPS 200 finish.-  
Colour: Pure Grey RAL 000 55 00
- Office: Microrib Profiled composite (rockwool type) Steel Cladding with HPS 200 finish.-  
Colour: Anthracite RAL 7016 preformed corners
- Office Walls: Trimo - Trimterm Flat Panel Steel Faced Horizontal Cladding Panels with Prisma finish.  
Colour: Orion RAL 9007. preformed corners
- Flashings and Trims: Fabricated Steel with HPS 200 finish.  
Colour: Anthracite RAL 7016.
- Office Doors & Windows: Double Glazed Window and Door units with Aluminium Polyester Powder Coated Frames with Anti-sun Glass.  
Colour: Slate Grey RAL 7012 with Grey Tint Glass.
- Warehouse Doors & Shutters: Vertical lift sectional shutter doors with vision panels.  
Steel security grade insulated fire escape doors  
Colour: Slate Grey RAL 7012.
- Signage: brushed stainless steel number, on min 30mm standoff posts.  
1200mm high - Text Style - Aerial Bold

1:5 = 25cm	1:200 = 10m
1:10 = 50cm	1:250 = 12.5m
1:20 = 100cm	1:500 = 25m
1:50 = 2.5m	1:1250 = 62.5m
1:100 = 5m	1:2500 = 125m

notes  
this drawing and design is the copyright of aja architects llp and must not be reproduced in part or in whole without prior written consent; contractors must verify all dimensions on site before commencing work or preparing shop drawings if in doubt ASK.  
Where this drawing contains any Ordnance Survey mapping material, it has been reproduced under license number 100032276.  
Ordnance Survey © Crown copyright 2020

A	29.10.21	initial issue.	ans
no.	date	revision	by



aja architects llp  
1170 Elliott Court  
Herald Avenue  
Coventry Business Park  
COVENTRY CV5 6UB  
T: 024 7625 3200  
F: 024 7625 3210  
E: aja@aja-architects.com  
W: www.aja-architects.com

AJA Architects is the trading style of AJA Architects Consulting Limited a limited company no. 10892795 and AJA Architects LLP (a limited liability partnership registered in England no. OC35721).

client:



project  
Proposed Development  
Plot 11e  
Hortonwood  
Telford  
drawing

Elevations Sheet 2  
PLANNING  
PUD Fingers

scale 1:200 @ A1 drawn ans

checked aljps date October 2021

no

6824 - 056 A